

Walking The Walk:

SWACO's Living Vision
of Sustainability in
Central Ohio

Education Center (EC) & Administrative Office Building (AOB) Project Fact Sheet

Project Overview

SWACO is constructing a new Administrative Office Building (AOB) and renovating its existing offices into a modern, interactive Education Center (EC) at: 4239 London Groveport Rd. in Grove City to improve service to the community.

Featuring a sustainability-forward design and approach to construction, the project reflects SWACO's vision and mission and emphasizes innovation and community engagement, while enhancing employee productivity and expanding public education opportunities.

Project Team

- ▶ **Hill International** - Owners Representative
- ▶ **Ruscilli Construction** - Construction Manager
- ▶ **DesignGroup** - (Architect of Record) in partnership with **BBCO Design** (Interior Architect) - Architectural Team
- ▶ **Swath Design** - Interactive exhibit designer for Education Center

Education Center (EC) & Administrative Office Building (AOB) Features:

Renovated AOB → New EC

The new EC will significantly expand SWACO's ability to serve schools and the public.

- ▶ **8,645 square feet**
- ▶ **Flexible classrooms and interactive exhibit space**

New AOB Addition

The new administrative office building is designed to improve collaboration, flexibility, productivity, acoustic separation, and staff health and well-being.

- ▶ **11,450 square feet**
- ▶ **Connected to the renovated EC**
- ▶ **Will house approximately 35 professional staff members**

Site Improvements:

- ▶ **Dedicated Bus Drop-Off Parking**
- ▶ **Bus Overflow Parking**

New & Enhanced Exhibit Areas Include:

- ▶ **Natural Resources**
- ▶ **Consumption**
- ▶ **Recycling**
- ▶ **Composting**
- ▶ **Disposal**
- ▶ **The Future of Waste**

Additional Features:

- ▶ **Circular Economy and Green Jobs Feature**
- ▶ **Hands-on Build a Landfill Game**
- ▶ **Outdoor Composting Space**
- ▶ **Recycling Sorting Game**
- ▶ **Sustainable Model Kitchen**



Project Timeline

The project is expected to break ground in late March 2026, with move-in projected for mid-2027.

Sustainability Highlights

The project is sustainability-forward and designed to align with SWACO's mission — not simply to meet a checklist, but to embody best practices in environmental stewardship.

Key Sustainability Goals Include:

Waste Reduction

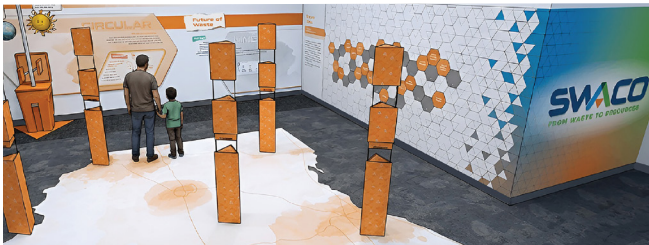
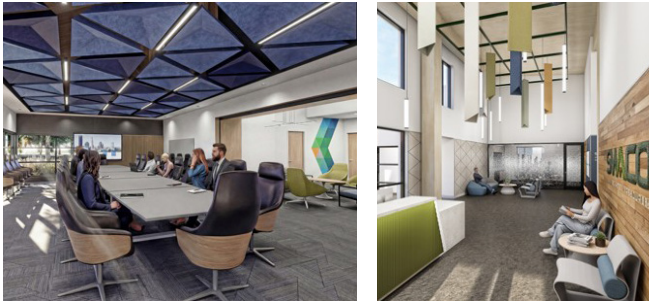
- ▶ **Renovation in lieu of demolition and new construction**
- ▶ **Waste reduction strategies** incorporated into design and construction including the use of recycled interior materials
- ▶ **Use of industry best practices for waste, recycling and composting systems** during building construction and operations

Embodied Carbon

- ▶ **Mass Timber- 43% reduction in embodied carbon** for the structural system

Operational Carbon

- ▶ Building orientation, window location and window performance carefully considered to reduce solar heat gain
- ▶ **30% energy reduction** through use of Geothermal energy system when compared to traditional systems
- ▶ **Rooftop solar installation** supports operational carbon reduction through on-site renewable energy generation



NET ZERO & LEED Certification

Sustainability efforts prioritize reducing the carbon footprint of the building – both operational and embodied carbon – and achieving net zero energy. SWACO will pursue LEED Silver certification at a minimum.

Project Cost - \$22 Million

Download conceptual renderings of the new Education Center and Administrative Office Building [here](#).

